



HOME > ENTERTAINMENT > PAPER CRAFTS >

## ONE-POINT ADVICE

See the advice on making papercrafts.

Search:

Go

### PAPER CRAFTS:

- ▶ REALISTIC PAPER CRAFTS
- ▶ RARE ANIMALS OF THE WORLD
- ▶ RARE ANIMALS OF JAPAN
- ▶ THE SEASONS
- ▶ MAKING OF PAPER CRAFT MODELS
- ▶ ONE-POINT ADVICE
- ▶ DOWNLOAD INSTRUCTIONS
- ▶ FAQ

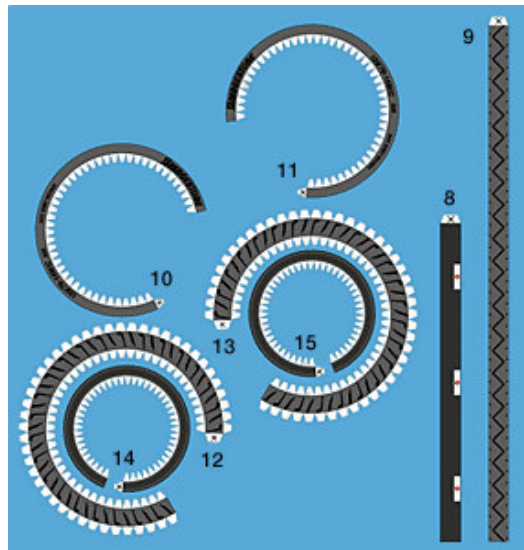
PAPER CRAFT [◀ TOP PAGE](#)



## TIPS for MAKING TIRES

Here's an illustrated instruction of how to make tires perfectly. Following a few tips is sure to greatly improve the finish.

\* The Realistic Paper Craft Model "TMAX" is used in the instruction as an example. The part numbers are those of TMAX parts. When making other models, find parts that are the same shape as those shown in the photo.



### Before You Start

Cut out each part carefully.

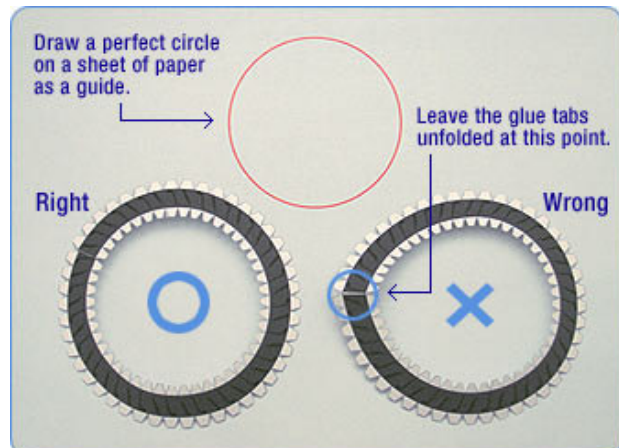


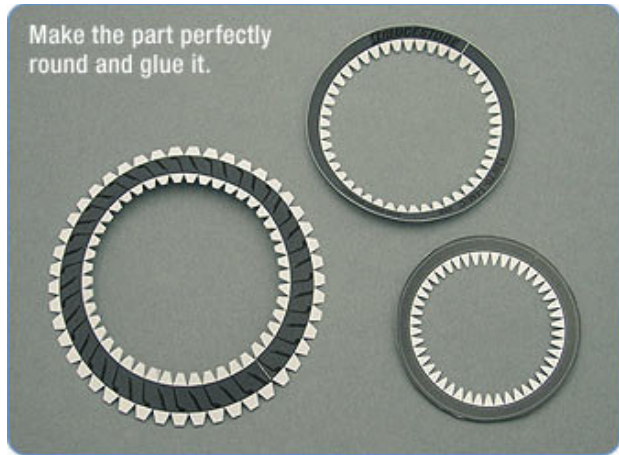
### Step 1 Make circular parts perfectly round.

Make sure circular parts are glued so as to make it perfectly round, not a tear-drop shape. Draw a perfect circle on a sheet of paper using the bottom of a cup or a glass, and use the circle as a guide in making the parts.

#### Point

Leave the glue tabs unfolded at this point.



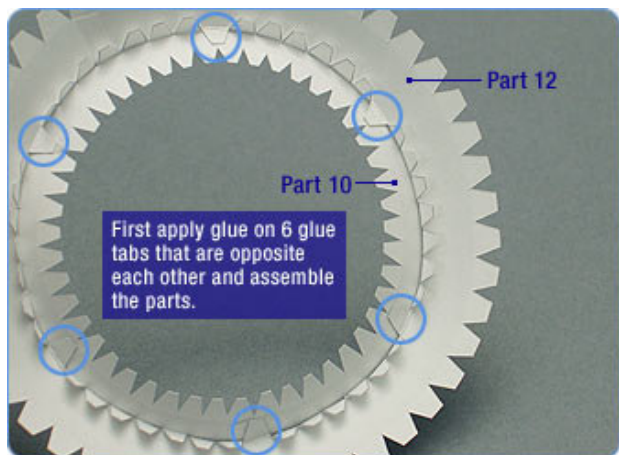
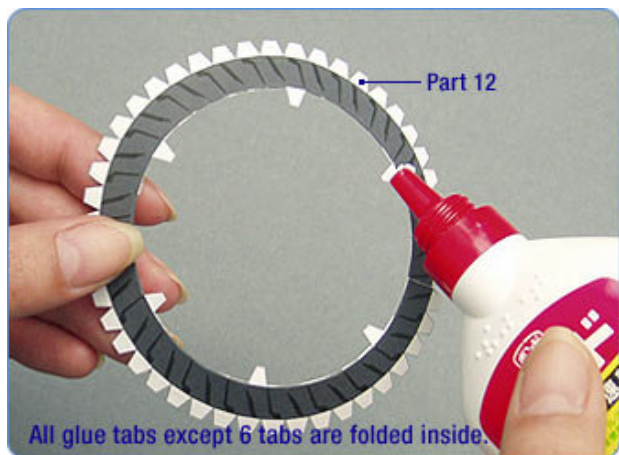


**Step 2** Use a “pinpoint tactic” in gluing.

When gluing the side faces of parts, as in part numbers 10 and 12, or 10 and 14, first apply glue at about 6 points and assemble the parts. Then, apply glue in all the rest of the glue tabs.

**Point**

The part maintains a perfect circle if you apply glue at points that are opposite each other.

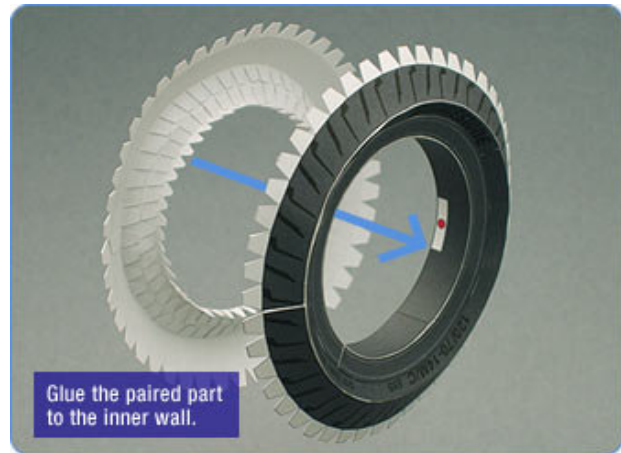


**Step 3** Glue the inner surface of the tire on the margined end first.

Don't glue Part 8 into a circular shape yet. Start gluing the inner surface of the tire (Part 8) from the end with the glue tab first. Then glue the paired part.

**Point**

The length needed for Part 8 may vary according to the thickness of paper. You may cut it at an appropriate length.



**Step 4** Keep the joint out of visible areas.

Start gluing the outer surface (Part 9) from the margined end.

**Point**

The length of Part 9 may come out short due to the thickness of paper used. In such cases, position the joint out of visible areas, like in the fender or at the bottom of the tire, so that the finish comes out clean.



**Step 5** Complete!!

How does your model come out? The suggestions here are not the only ways to assemble. If you find any other assembling tips, please share them with other paper craft fans.



TMAX parts are used as an example here. When making other models, apply these suggestions and tips to assemble the parts with the same shape.

#### 🔴 ONE-POINT ADVICE

[Company Profile](#) | [Global Links](#) | [Business](#) | [Entertainment](#) | [News Release](#) | [Racing](#)

[Terms of Use](#) | [System Requirements & Plug-Ins](#) | [Privacy Policy](#) | [Site Map](#) | [Contact Us](#)

Copyright ©2005 Yamaha Motor Co., Ltd. All Rights Reserved.

⬆️ [Back to Top](#)